

Ickburgh School

Kenworthy Road, Hackney
E9 5RB



SEN Information Report



SEN Information Report

Our SEN Information Report provides information about the support and opportunities available in our school for your child with special educational needs and disabilities (SEND) and your family.



About our school

Ickburgh School provides an exciting educational programme for children, young people and young adults aged 3 to 19 years old who have a range of SEND.



Our Ethos



We have a duty to provide our pupils with a sense of **fulfilment**, **belonging** and the greatest possible level of **independence** they can achieve.

We understand these words to have the following meaning to our pupils:

- **Fulfilment** – a sense of satisfaction and peace resulting from enjoying and succeeding across the days, terms and years of their school experience. This experience will include a range of activities and content which supports them to understand and contribute to the world around them.
- **Belonging** – a feeling of being part of the community; both in class, school and in the wider community beyond.
- **Independence** – both the communication skills to understand the features of their daily life and to express themselves, and the life and independence skills to do as much as possible by themselves for themselves.

Our curriculum is balanced and designed to achieve these aims.



Pathways



Our provision is divided into three Pathways, to ensure pupils are supported to fulfil their potential.

Pathway	SEND
Connecting Learners	For learners with severe learning difficulties and Autism
Active Learners	For learners with severe learning difficulties (some of whom may have a diagnosis of autism)
Sensory Learners	For learners with profound and multiple learning difficulties, many of whom have visual and hearing impairments and complex medical needs

These Pathways run from Early Years to Primary, Secondary and Sixth Form. More detail on our Pathways is included in our 'Curriculum and Assessment Policy', available to you on request or on the school website.



Communication



To promote communication and understanding, we make use of Alternative (for those who can't or can't yet speak) and Augmentative (to help those who have difficulties with speech) Communication. Strategies are used within and across Pathways, personalised to the needs of the learner.

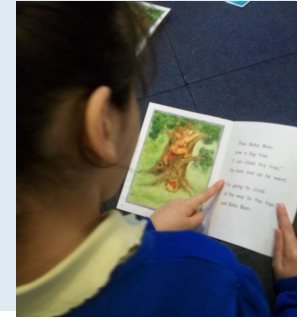
- Picture Exchange Communication Systems or PECS where images are given to make requests for real items
- Alternative and Augmentative Communication to support speech or provide a voice to pupils without speech, including 'low tech' Core Boards - with key symbols and words which pupils can point to and make themselves understood-and high-tech devices (including tablets).
- Switch Communication, the use of single and multiple message devices to structure conversations and develop understanding of cause and effect.
- Makaton - signing of words instead of or alongside speech
- Canaan Barrie on-body Signing - interactive touch and movement signing system used to communicate and build trust with our learners.

Communication strategies continued



- **Objects of Reference** - items to represent subjects or areas of the school, e.g. a wooden spoon for Food Technology
- **Visual Timetables** and **Now and Next** boards (showing images of what is happening now and what is going to happen next)
- **TEACCH** - an evidence-based academic programme that is built on the idea that autistic individuals are often visual learners, so teachers must respond by adapting their teaching style and intervention strategies.
- **Adult Child Interaction** - an approach to interaction promoting our learners' 'voice' and 'choice' because that it takes more than words to communicate
- **Intensive Interaction** - designed to help learners enjoy being with other people, relate, interact, and practice communication routines.
- **MiLE (Multisensory Interactive Learning Environments)** opportunities for our learners to explore their immediate surroundings, develop preferences and a sense of autonomy.
- **Sensory Learners** and **Connecting Learners** songbooks to help represent the start and end of activities and transitions between activities.

Core Skills - Developing Literacy and Numeracy is a key priority



To develop our pupils Literacy skills we use:

- Developing pupil's core skills, in Literacy and Numeracy is a key priority.
- Letters and Sounds to develop their phonics skills
- Daily Supported Reading to help develop their reading skills

To develop our pupils Numeracy skills we use:

- Numicon, a physical resource to develop understanding of number
- Concrete objects to understand Geometry
- Practical activities to work on Measurement skills

Preparing for adulthood

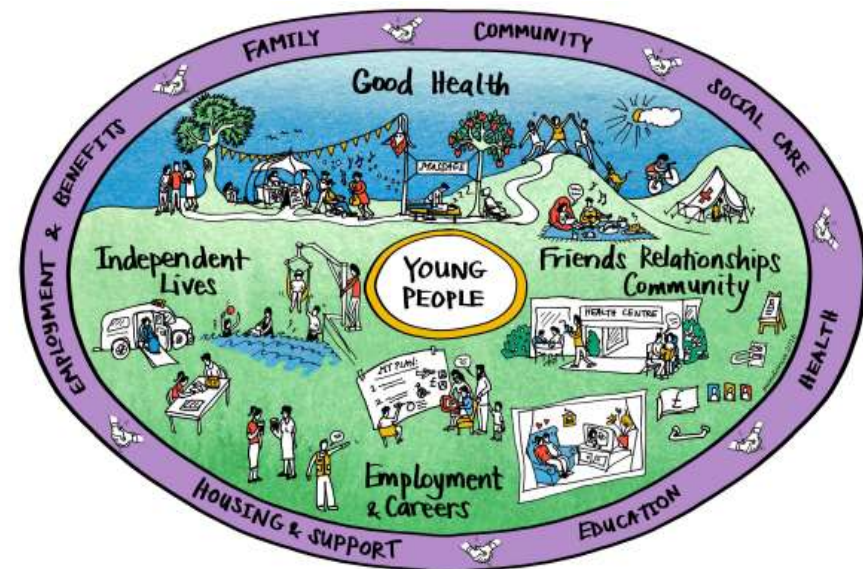
At Ickburgh School all of our education is seen as a preparation for adulthood.

For our sixth form students adulthood is an ever closer reality.

Our vision is to maximise every learner's potential to enable them to live as fulfilled a life as possible in the community.

The four areas of preparation for adulthood are Good Health, Independent Lives, Employment and Careers and Friends, Relationships and Community.

On the following pages, you will find anonymised examples of pupils' journeys through Ickburgh School and into adulthood.



'Syed'

Connecting Learner Pathway

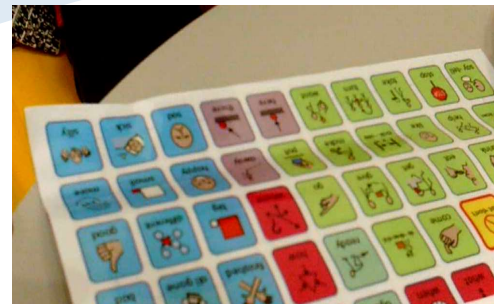


Being part of
the community

Developing skills
for life including
communication

Exploring and
enriching

Developing
social,
emotional
and learning
skills



'Sean'

Active Learner Pathway



The world of
college and
work

Developing life
skills

Exploring and
enriching

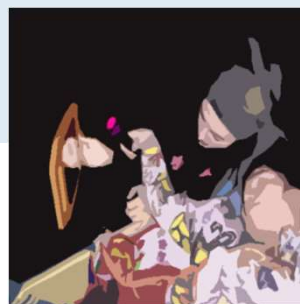
Developing
core skills



Ickburgh School is the first special school to participate in Hackney 100 and organise paid work experience placements for our students with the park services at London Fields.

Sensory Learner Pathway

‘Jennifer’



Learning about
each other;
staff and pupil

Exploring and
enriching

Recognising and
building skills

The means to
communicate, and
access places and
activities to enjoy



Our site

Ickburgh School pupils benefit from a state of the art purpose built modern building, which is fully accessible.



Our site

To support with pupils' physical development we have a hydrotherapy pool, rebound therapy suite and gym.



Our site

To support with pupils' sensory development and communication we have five sensory rooms.



Our site

To support with pupils' preparation for adulthood, sixth formers have use of an independent living flat.



Our site

Sensory Learners benefit from a sensory garden on the veranda for outdoor learning.



Performing arts

We have a number of partners in creating enriching arts opportunities for our pupils, including working with the London Symphony Orchestra, Shakespeare in Schools, and Sadler's Wells.



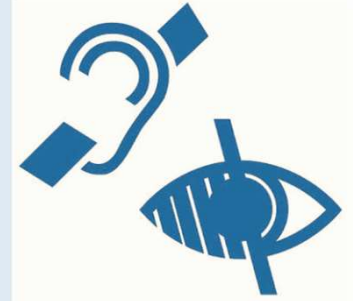
Therapy



To support pupils through highly personalised programmes towards their outcomes, we have the support of a range of professionals throughout the week:

- Speech and Language Therapists
- Physiotherapists
- Occupational Therapists

Specialist teachers



For those pupils with hearing and/or visual impairments, we have support from teachers for the visually and hearing impaired.

School nursing team



A full-time NHS school nurse supports our students and families additionally assisted 3 days a week by a health care assistant.

For pupils with medical needs, a Care Plan is written by the nurse with your support, it details the prescribed medication your child requires and any prescribed medication that your child needs administered in school.

As well as supporting pupils who have medical needs, the nursing team help with the school curriculum and provide training to school staff members.



Consultant paediatrician



Your child's annual medical can be arranged with you in our consultation room, on the school site, and facilitated by a consultant NHS paediatrician.

The specialist local NHS dental team also make regular visits to support pupils.



Home – school communication



We recognise that parents and carers are the most important partners in supporting our pupils' learning.

We communicate with parents and carers in the following ways:

- **Home / School Book** to send home a diary of your child's activities each day.
- **Open evenings** in Term 1(Autumn) and Term 3 (Summer) each academic year for parents and carers to see, hear and discuss their child or young person's progress.
- We write an **Annual Report**, summarising your child's progress over the year which is sent to you in Term 3 (Summer).

We want to work well with parents for the sake of the students but if issues arise a clear complaints procedure is set out on the school website.



Learning at Home



We have a significant 'Learning at Home' offer, to support parents and pupils with continuing their progress outside of school hours.

There is a dedicated section of our school website sharing resources and ideas.

We have our own YouTube channel for sharing videos of sessions to share with pupils at home, including PE activities, Music and TEACCH sessions.



Social Care



Ickburgh School works closely with families and Social Care to ensure our pupils are best supported outside of school and in the community.

For this, the school has a link social worker from the Disabled Children's Service who supports to make sure communication is strong and outcomes are achieved for the benefit of all.

School transport



Hackney SEND Travel Assistance Service provides transport to and from our school for children and young people with SEN using buses and other sub-contractors.

If your child requires transport to school, we will advise and support with an application.

Contact: Hackney SEND Travel Assistance Service 8 Rigg Approach Lea Bridge Road London E10 7QN

Phone: 020 8558 4283

Fax: 020 8532 8926

Email: transport@hackney.gov.uk



Other sources of support and information

Each borough must have a free arm's length service providing impartial and confidential information, advice and support to parents and carers of children and young people with SEND.

Hackney SENDIAGS (SEND Information, Advice and Guidance Service)

Ann Tayler Children's Centre

1-13 Triangle Road off Westgate Street

Hackney E8 3RP

Phone: 020 7275 6036 (Advice Line)

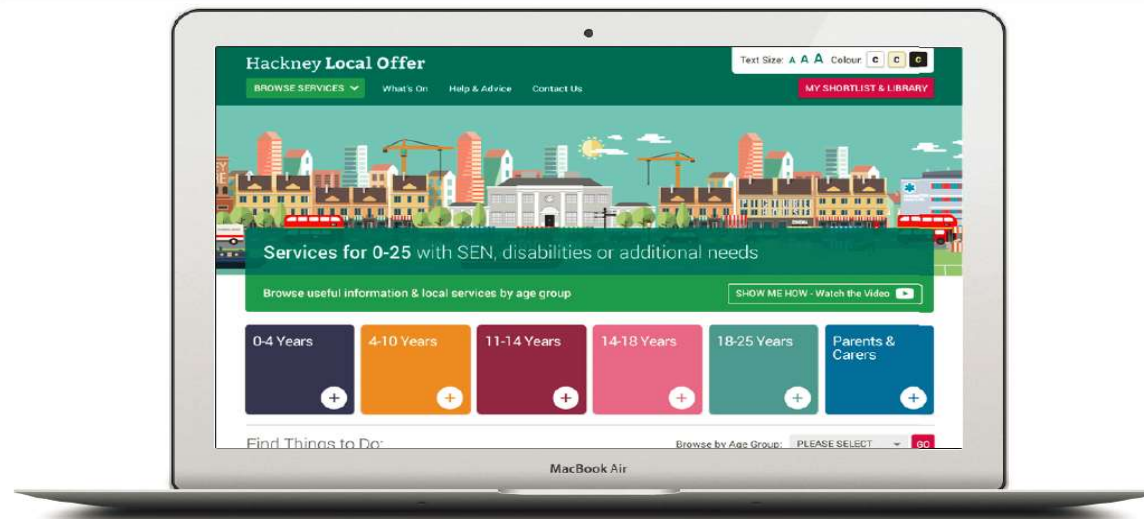
E-mail: SENDIAGS@hackney.gov.uk

Web: www.hackneysendiags.co.uk



Other sources of information

The Local Offer co-ordinator attends open evenings at the school to help parents find out about services that may be helpful to them. Hackney's Local Offer website provides information about a range of local and national SEND services and processes can be found here: www.hackneylocaloffer.co.uk



How to get in touch



We have a full-time Family Liaison Officer who provides support to all of our pupils and their families.

If you would like to learn more about the school, or to arrange a visit, please get in touch-we'd love to hear from you.

Phone: 0208 806 4638

E-mail: admin@ickburgh.hackney.sch.uk

Address: Ickburgh School Kenworthy Road, Hackney E9 5RB

